



**MISS DIG 811**  
**2023**  
**ANNUAL**  
**MEETING**



JANUARY 17 & 18, 2023  
SOARING EAGLE CASINO



## EDUCATIONAL SESSIONS

MISS DIG 811 will be offering 1.5 days of educational and informational sessions on Tuesday and Wednesday. Many sessions offer attendees continuing education credits (CECs).

The Annual Meeting will be held during breakfast on Tuesday morning. Each year, MISS DIG 811 provides the membership with an update on the financial standing of the organization and vision for the upcoming year.

MITA events will also be held Wednesday and Thursday.

## ACCOMODATIONS

### STAY WITH US AT THE CASINO

MISS DIG 811 has secured a room block at Soaring Eagle Casino from Monday, January 16, to Thursday, January 19. The discounted room rate is \$139.00

### SECURE YOUR ROOM

Visit

<https://www.soaringeaglecasino.com/resort/> to book your room. Make sure to use group code **MD011623** to receive the discounted rate.

# SESSIONS OFFERED

## TUESDAY

**8:00 - 9:15 AM**

- Annual Meeting

**9:30 - 11:30 AM**

- DamagePreventionPortal  
FUNdamentals
- MISS DIG 811 Damages and Targeted  
Efforts
- OneCallAccess
- Pelican Platform Assistance

**11:30 - 12:45 PM**

- Lunch

**12:45 - 2:45 PM**

- CAMO
- Collaborative Process to Safe Digging
- DamagePreventionPortal Advanced
- MISS DIG 811 Marine Safety
- OneCallAccess Plus
- Pelican Platform Assistance
- Safe Excavation Practices

**5:00 PM**

- Networking Event

## WEDNESDAY

**8:00 - 9:00 AM**

- OneCallAccess (Part 1 of 2)
- Safe Excavation Practices (Part 1 of 2)
- WMI District Pre-Season/Pre-Con

**9:00 - 10:00 AM**

- OneCallAccess (Part 2 of 2)
- Safe Excavation Practices (Part 2 of 2)
- EMI District Pre-Season/Pre-Con

**10:15 - 11:15 AM**

- OneCallAccess Plus (Part 1 of 2)
- Theory of Locating (Part 1 of 2)
- NMI District Pre-Season/Pre-Con

**11:15 - 12:15 PM**

- OneCallAccess Plus (Part 2 of 2)
- Theory of Locating (Part 2 of 2)
- UP District Pre-Season/Pre-Con





# SESSION DESCRIPTIONS

## ANNUAL MEETING

COME OUT TO HEAR FROM THE MISS DIG 811 BOARD OF DIRECTOR AND KEY TEAM MEMBERS ON THE STATE OF MISS DIG 811, A LOOK BACK AT 2022, AND WHAT YOU CAN EXPECT IN 2023.

## CAMO

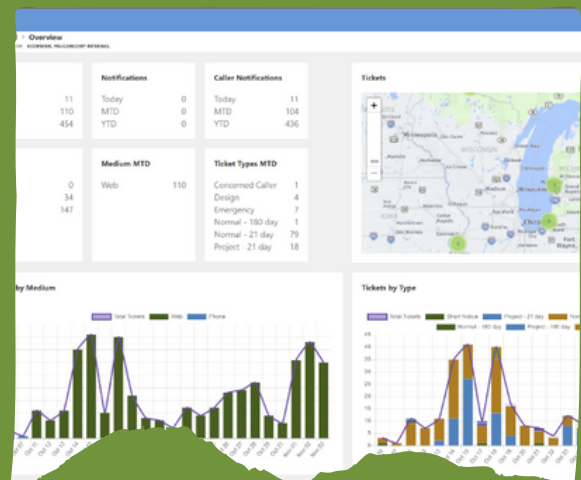
COASTAL AND MARINE OPERATORS GROUP (CAMO) IS AN INDUSTRY INITIATIVE ENGAGING MARINE VESSEL OPERATORS TO PROMOTE PUBLIC AND SUBMERGED FACILITY SAFETY SINCE 2009. CAMO HELPS CREATE AND RECOMMEND BEST PRACTICES THAT ARE VALUABLE INFORMATION REGARDING PIPELINE SAFETY, DAMAGE PREVENTION, AND EMERGENCY RESPONSE FOR ALL MARINE ENVIRONMENTS. CAMO NOW HAS OVER 25 PARTICIPATING MAJOR OIL AND GAS COMPANIES AND AGENCIES, ALL WORKING TO ENHANCE DAMAGE PREVENTION AND MARINE SAFETY INITIATIVES.

## COLLABORATIVE PROCESS TO SAFE DIGGING

ALL PARTIES INVOLVED IN THE DIGGING PROCESS WILL SIT ON A PANEL TO EXPLAIN HOW WHEN WE ALL WORK TOGETHER, GREAT THINGS CAN HAPPEN. WE GET INTO THE DETAILS AND ANSWER QUESTIONS ON OVERLAP WHEN FOLLOWING THE PROCESS LAID OUT IN PA 174. THIS TRAINING OFFERS 2 CECS.

## DAMAGEPREVENTIONPORTAL FUNDAMENTALS

MEMBERS OF THE MISS DIG 811 SYSTEM ACCESS THEIR STATIONS, SUBSCRIPTIONS, AND TICKETS RECEIVED THROUGH THE DAMAGEPREVENTIONPORTAL. USERS OF THE PORTAL HAVE ACCESS BASED ON THE ROLE ASSIGNED TO THEIR USER ACCOUNT. THIS COURSE COVERS THE FEATURES AVAILABLE TO MOST ACCOUNT TYPES, BUT ALL DAMAGEPREVENTIONPORTAL USERS WILL BENEFIT FROM THE CONTENT PROVIDED. TIME WILL BE ALLOCATED AT THE END OF THE SESSION FOR FEEDBACK AND QUESTIONS. THIS TRAINING OFFERS 2 CECS.



# SESSION DESCRIPTIONS

## **DAMAGE PREVENTION PORTAL ADVANCED**

THIS CLASS SHOULD BE COMPLETED FOLLOWING THE FUNDAMENTALS COURSE FOR AUTHORITY VIEWER, ADMIN, AND FULL ACCESS USERS. IT WILL EXPAND ON TOPICS COVERED IN THE PREVIOUS COURSE (PRIMARILY STATIONS AND SUBSCRIPTIONS). UPON COMPLETION, USERS WILL HAVE THE KNOWLEDGE TO SAFELY CHANGE STATION SETTINGS AND CREATE AND UPDATE SUBSCRIPTIONS. TIME WILL BE ALLOCATED AT THE END OF THE SESSION FOR FEEDBACK AND QUESTIONS. THIS TRAINING OFFERS 2 CECS.



## **MISS DIG 811 DAMAGES AND TARGETED EFFORTS**

HOSTED BY DAVID CHISLEA OF THE MICHIGAN PUBLIC SERVICE COMMISSION.



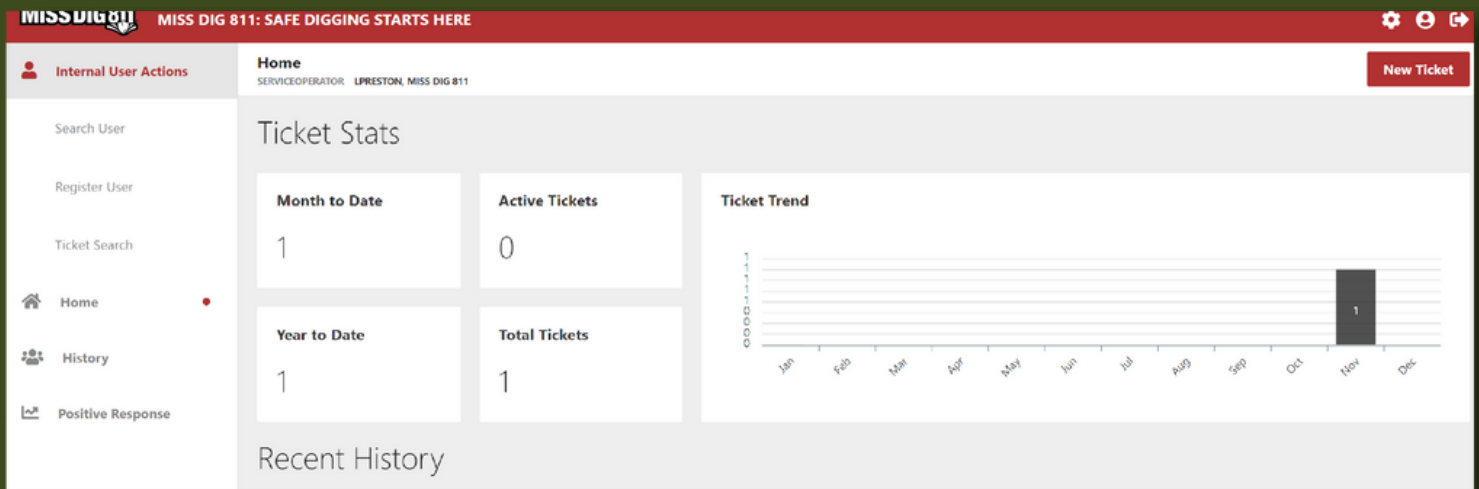
## **MISS DIG 811 MICHIGAN MARINE SAFETY**

WE ARE OFFERING THIS TRAINING FOR THOSE WORKING IN MICHIGAN AROUND WATER AND CONCERNED FOR OUR WATERWAYS. MISS DIG 811 MICHIGAN MARINE SAFETY PROVIDES SAFETY PROCEDURES AND ONLINE TOOLS TO EXCAVATORS AND OTHERS THAT WORK IN OR NEAR THE WATER AROUND UTILITIES AS THEY COMPLY WITH PUBLIC ACT 174. THIS TRAINING OFFERS 2 CECS.

# SESSION DESCRIPTIONS

## ONECALLACCESS

PROVIDES NEW USERS OF THE ONECALLACCESS (OCA) PROGRAM WITH THE BASIC SKILLS AND KNOWLEDGE TO COMPLETE AN ACCURATE TICKET, CHECK THE STATUS OF A TICKET, AND INFORMATION ON WHERE TO ACCESS ASSISTANCE. THIS TRAINING OFFERS 2 CECS.



## ONECALLACCESS ADVANCED

PROVIDES USERS OF THE ONECALLACCESS (OCA) PROGRAM WITH THE ADVANCED SKILLS AND KNOWLEDGE TO COMPLETE PROJECT, 180-DAY, SHORT NOTICE, EMERGENCY, AND RETRANSMIT TICKETS. THIS TRAINING OFFERS 2 CEC.

## PELICAN PLATFORM ASSISTANCE

TEAM MEMBERS FROM MISS DIG 811 WILL BE AVAILABLE THROUGHOUT THE DAY TO ASSIST MEMBERS AND USERS WITH PELICAN PLATFORM QUESTIONS AND CONCERNS.

# SESSION DESCRIPTIONS

## **PRE-SEASON/ PRE-CON**

MISS DIG 811 HAS CONTACT WITH 1,613 MEMBER FACILITY OWNERS/OPERATORS, IN ADDITION TO APPROXIMATELY 70,000 CONTRACTORS. THIS GIVES US THE ABILITY TO GATHER THE CORRECT PARTIES FOR PRE-CONSTRUCTION MEETINGS, AND WHAT BETTER PLACE TO ACHIEVE THIS THAN OUR ANNUAL MEETING! DURING THESE MEETINGS, THE GROUP CAN IDENTIFY POTENTIAL CONFLICTS THAT MAY ARISE OR OVERLY VAGUE SPECIFICATIONS AND DISCUSS RESOLUTIONS BEFORE WORK STARTS. THIS SAVES A LOT OF TIME AND MONEY AND IS THE BEST CHANCE TO MANAGE EXPECTATIONS AND CLARIFY PROJECT GOALS.

## **SAFE EXCAVATION PRACTICES**

THE GOAL OF TEACHING MISS DIG 811 SAFE EXCAVATION PRACTICES IS TO PROVIDE SAFETY PROCEDURES AND ONLINE TOOLS TO EXCAVATORS AND OTHERS THAT WORK AROUND UTILITIES FOR COMPLIANCE WITH PUBLIC ACT 174. THIS TRAINING IS VALID FOR ONE YEAR AND OFFERS 2 CECS FOR MULTIPLE LICENSURES.

## **THEORY OF LOCATING**

THIS SESSION WILL INTRODUCE THE THEORY OF LOCATING AND ITS IMPORTANCE TO MAINTAINING UNDERGROUND FACILITY SAFETY.





# CONTINUING EDUCATION CREDITS

THE BELOW SESSIONS OFFER CONTINUING EDUCATION CREDITS FOR  
WASTEWATER, DRINKING WATER, AND RESIDENTIAL BUILDER.

Session Name	Wastewater CEC	Drinking Water CEC	Residential Builder CEC
Safe Excavation Practices	0.2	0.2	2
Theory of Locating	0.2	0.2	2
Collaborative Process to Safe Digging	0.2	0.2	2
DamagePreventionPortal Fundamentals	0.2	N/A	2
DamagePreventionPortal Advanced	0.2	N/A	2
OneCallAccess	0.2	N/A	2
OneCallAccess Advance	0.2	N/A	2
MISS DIG 811 Michigan Marine Safety	0.2	0.2	2



[www.missdig811.org/members/annualmeeting.html](http://www.missdig811.org/members/annualmeeting.html)

And

Book your room at Soaring Eagle  
using Group Code **MD011623**  
to receive the discounted rate of  
**\$139.00**

